

Bonopty®

Sampling a lytic lesion: Transpedicular approach

Case history

Breast cancer with skeletal metastasis.

Biopsy details

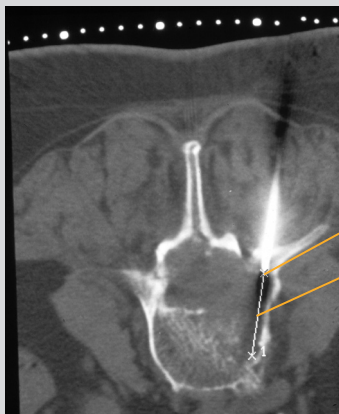
Through the anchored Bonopty® Penetration Cannula, 4 biopsies were performed from the mostly lytic lesion: one with Bonopty® Biopsy Cannula and 3 with a biopsy gun.

Analysis of the samples

Two adequate specimens obtained with the biopsy gun showed metastasis.

Comments

Anchorage in the bone ensures a stable position, facilitating multiple biopsies without the need for a controlling CT-scan. As the lesion was almost purely lytic, Bonopty® Biopsy Cannula was not suitable for obtaining a specimen.



CT scan of the third lumbar vertebrae

Anchored Bonopty® Penetration Cannula

15 mm throw (measurement line shown)

Acknowledgements:

Courtesy of Dr K. Gunnar O. Åström and Dr K. Håkan Ahlström, Uppsala University Hospital.

Bonopty® is a registered trademark of AprioMed AB, Sweden.